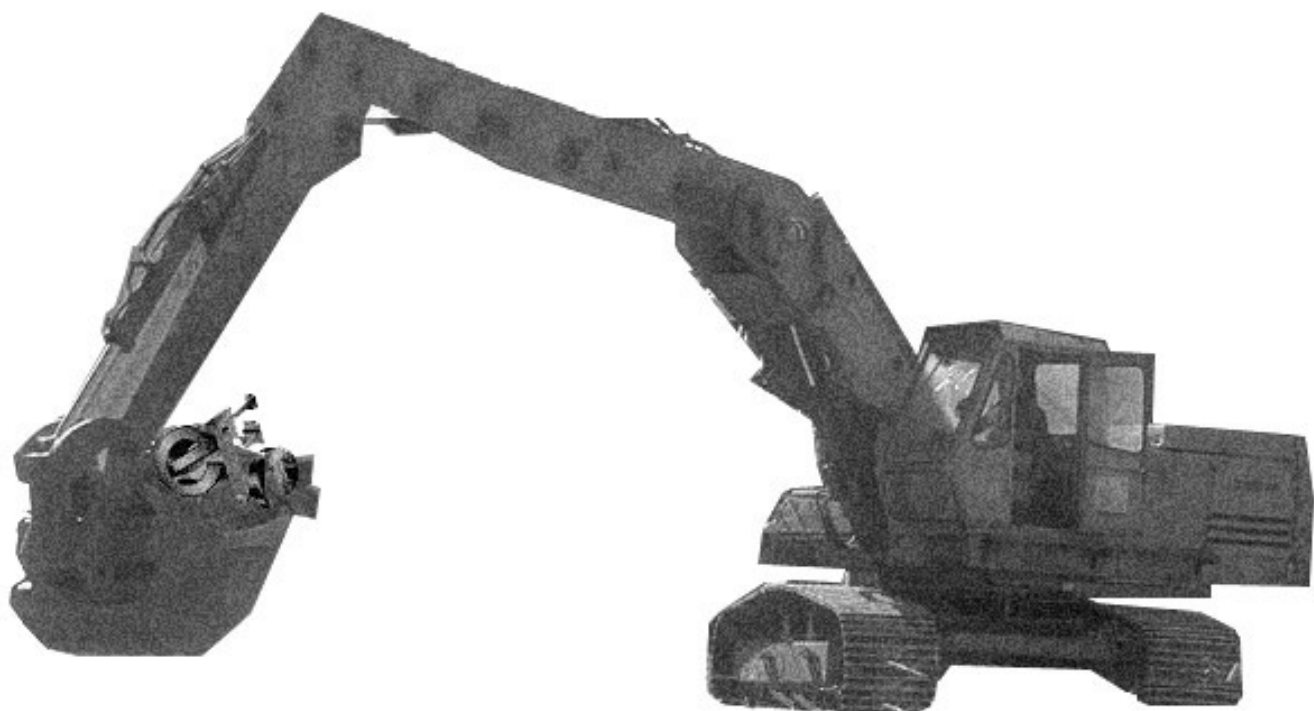
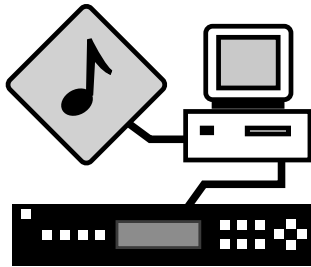


E-Loader Operation Manual



Multi-Function Tools for E-MU Instruments





E-Loader Operation Manual



Before you Begin -

Read and follow the instructions given in the "READ BEFORE INSTALLING" file that comes with the E-Loader installer program.

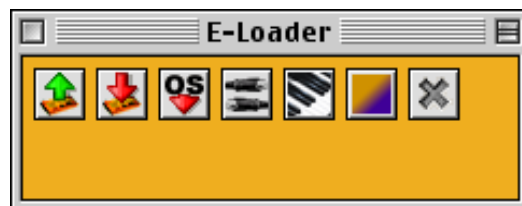
E-Loader is a multi-function application for E-MU instruments. The first two features are applicable to the Proteus or EOS family of products without a sequencer. The Sequence Bank Browser and Sequence Downloader are extremely useful if you own an XL-7, MP-7 or Proteus 2500.

- An **Operating System Downloader** which enables you to upgrade the software of your E-MU product. When a new version of the OS is released, we immediately post it on our web site (www.emu.com). This makes it easy for you to get the latest software for your instrument.
- A powerful suite of **MIDI Utilities** which can examine and generate MIDI data in order to troubleshoot any component of your MIDI setup.
- A **Sequence Bank Browser** that lets you examine complete banks of patterns and songs from your XL-7, MP-7 or Proteus 2500, then upload them to your computer for backup to use with another sequencer or any Standard MIDI File application.
- A **Sequence Downloader** which allows you to download a group of patterns or songs at once to your XL-7, MP-7 or Proteus 2500. Any Standard MIDI file (SMF) can be downloaded.

Songs should be "Type 0" SMF's. (Type 1 SMF's will automatically be converted to Type 0 when loaded into Song locations.) Either Type 0 or 1 SMF's can be downloaded into Pattern locations.

Open the E-Loader application

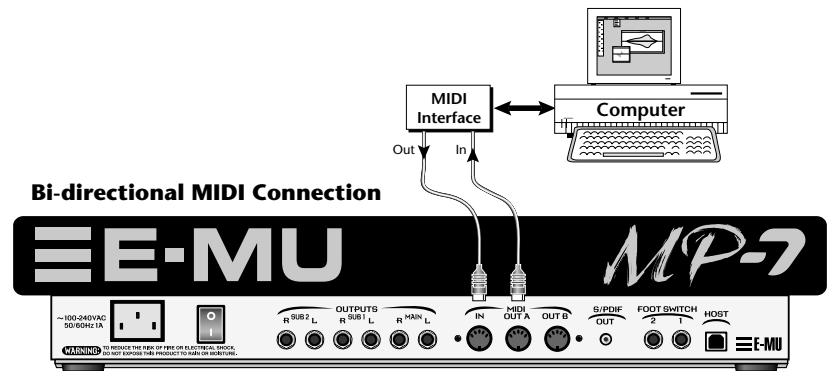
On the Macintosh, double-click the E-Loader application icon. On the PC, select the E-loader item in the Start Menu. After launching the application, the E-Loader Toolbar will be displayed. Continue reading for detailed information on the E-Loader functions.



Hardware Setup

Bi-Directional MIDI Connection

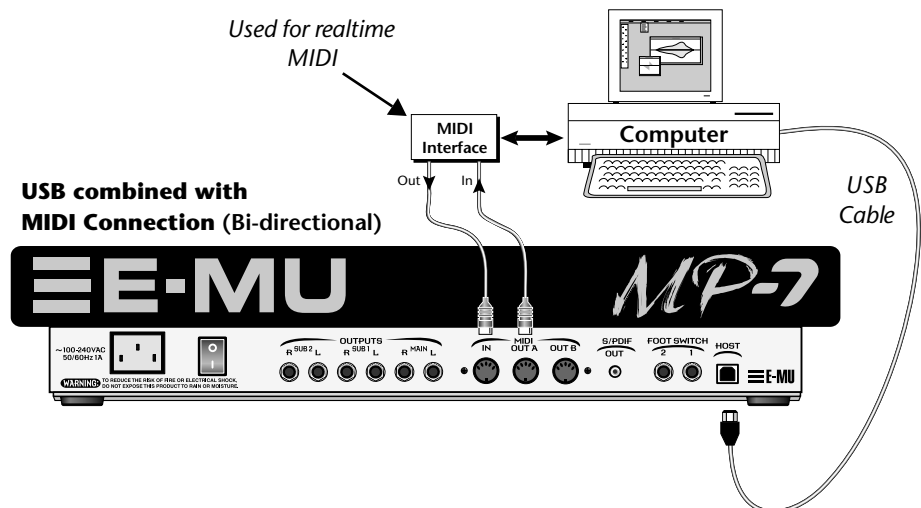
Before you can begin E-Loading, you must establish a connection between the E-MU instrument and your computer. A bi-directional MIDI connection can be used on both Macintosh or PC computers. An example of this connection is shown below.



See the "Read Me" file placed on your hard disk by the installer for a listing of supported systems.

Bi-Directional USB Connection

Supported systems* can take advantage of USB, which provides a higher speed connection than MIDI. USB is intended for accelerating sequence transfers. You will continue to use MIDI for realtime performance data or OS downloading. Connect a USB cable as well as bi-directional MIDI cables between your computer and the E-MU instrument as shown below.



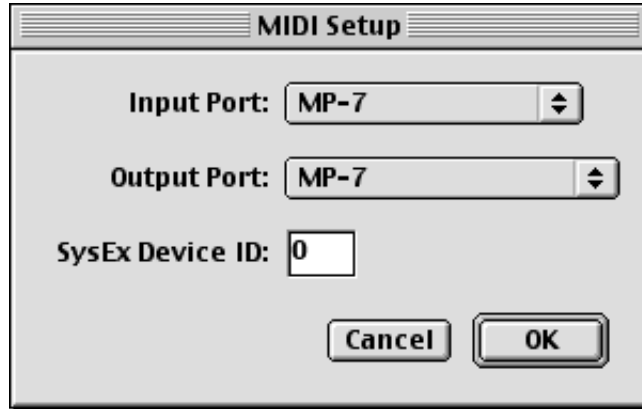
A USB connection greatly accelerates data transfers between your E-MU instrument and the computer.



MIDI Setup

This screen lets you know at a glance which MIDI device is currently selected. Select MIDI Setup from the MIDI menu bar or by clicking on the Device button located in the upper left corner of any of the E-Loader windows (as shown at left).


1. After making the MIDI connection and launching the E-Loader application, choose "MIDI Setup..." from the MIDI menu on the toolbar. The following window appears:

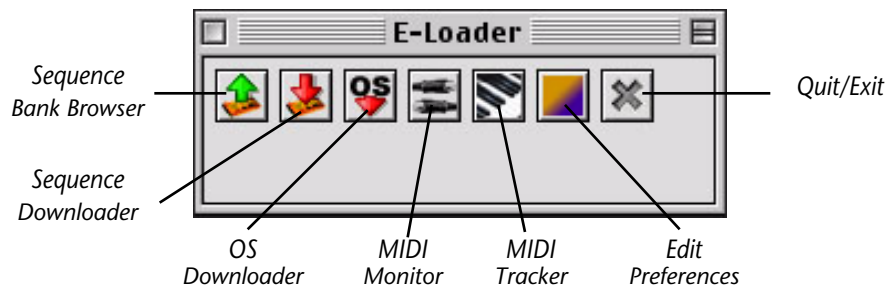


2. Set the Input and Output ports to match those connected to your E-MU instrument.
 - A USB option will appear in the Input/Output Port list if you have USB connected.
3. The SysEx Device ID should also match the MIDI SysEx Device ID on the E-MU instrument you want to address (Default = 0). This is especially important if you have more than one E-MU instrument connected. When using multiple E-MU instruments, set each instrument's Device ID to a different number.
4. Press OK to select and save the MIDI settings.

Toolbar

The Toolbar (shown below) appears after launching the E-Loader application. If the Toolbar is not visible, you can call it up by pressing Command ⌘-T (Mac)

 If you forget the meanings of the icons in the Toolbar, simply position the cursor over the icon and a label will appear beneath it.





OS Downloader

The Operating System Downloader makes it easy to update the software in your E-MU instrument. Whenever we release a new version of the software to add features or fix bugs, it is immediately posted to the our web site. Using E-Loader and MIDI, you can transfer the software to your module in minutes.

...or you can drag and drop OS .dli files to this area.

Click here to select the OS file. →

Click here to select your E-MU instrument. →

1. Turn on your E-MU instrument while holding the correct buttons. (See ★ below.)

2. Press the Download button to begin downloading.

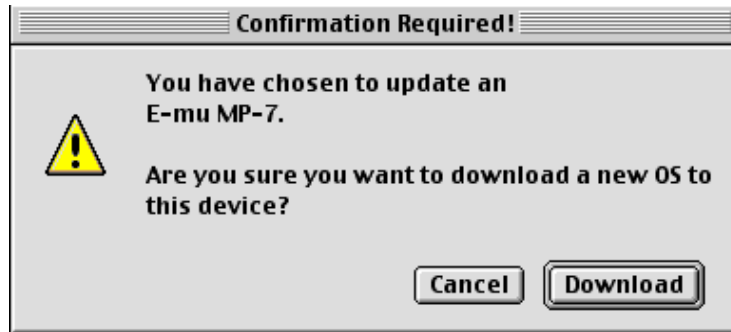
★ **To Enable a Download Request:**

- Power-up while holding...
Audity 2000 - Clock & Enter
Proteus 2000 & all other Modules - Audition & Enter
EOS Samplers - Enter

🔧 **To Download a new Operating System:**

1. Make sure you have a bi-directional MIDI hookup as described on page 3. Verify that you have proper 2-way communication using the MIDI Tracker feature (page 15).
2. **Download the new OS** from the E-MU web site. Be sure to read the Release Notes which accompany the OS .dli file.
3. Select the Downloadable OS file by clicking the **Downloadable File Selection** button. The standard file picker window appears. You can also drag and drop OS .dli files into the OS file selection box.
4. Select your E-MU instrument using the **MIDI Setup** button.
5. **Power up** your E-MU instrument while holding the **correct button combination**. (See the ★ sidebar note at left for details.) The display on your E-MU instrument should read, "Searching for OS..."

6. The Download Status on E-Loader should now read, "Download Request Received" and the button should be active. Press the **Download** button to begin downloading the OS.
7. A confirmation screen appears giving you one last chance to abort. Press **Download** to continue or **Cancel** to abort the download.



8. OS download via MIDI takes several minutes to complete. Progress indicators on the computer screen and on the E-MU instrument shows the status of the download.
9. Upon completion, the E-MU instrument requires that you "Press Enter to commit to Flash Memory" and a checksum number will be displayed. The checksum should conform to the checksum number listed in the release notes.
10. Press **Enter** to restart the instrument, which should boot normally.



Sequence Bank Browser

The Sequence Bank Browser lets you browse through complete banks of patterns and songs, then upload them to your computer for backup or sharing. Patterns and songs can also be downloaded back into your XL-7, MP-7 or Proteus 2500 directly from the Bank Browser. *This feature currently has no function when connected to other E-MU instruments.*

 **Click the Sequence Bank Browser icon:**


If your hardware is properly connected (*page 3*), the Browser will automatically begin communicating with your XL-7, MP-7 or Proteus 2500 to request the first bank of patterns.

Change or View the current Device Configuration

Select a Bank of Patterns or Songs

Upload the selected Pattern or Song

The Refresh button gets the current Pattern or Song list.

 **Bird Run.mid**

You can drag & drop an SMF onto any location.

Bank Browser

Device: MP-7

0: A2DJ	32: Mr Amoeba	64: Sista Sinista	96: Zs BEAT
1: Clockers	33: BOUNCE wIT Z	65: BABETTE	97: Zs DANCE3
2: BurninLuv	34: ZMANS CURE	66: Bird Run	98: ZUp
3: Cues Tip	35: FREDZS BALLAD	67: Dragonkid	99: BOOMIN Z
4: DAT WUTI C	36: Photos Of Heroes	68: SHAKE AZZ	100: JAZZY Z
5: UNext	37: Zs PONY	69: CRACKED	101: BAC AGAIN
6: DeDuctive	38: U Dream A+B	70: HANDSUP	102: Datsmydogg
7: CONTACT Z	39: SouthBeachee	71: Z Jazzin	103: THATS THAT
8: SPANISH Z	40: MELLOW Z	72: OLD Z	104: Blusta A+B
9: Sincerely	41: D Rockin	73: Da Bridger	105: Drivinhom
10: My Maggie	42: CRUNCHY Z	74: THERE Z IS	106: Playerslounge
11: JazzyAl	43: Fell Out	75: ForGET U THEN	107: Thuggzwife
12: Sickbeats	44: Rococo	76: Bling	108: FREDZS STRIKE
13: House Ping	45: Zoot Suit	77: Hoodrat	109: DR BOOM
14: Co Co Whah	46: Dandy	78: Zs GROOVE 2	110: POPOVERS
15: ALsBeotch	47: Zs BACK	79: Zs GROOVE	111: MOUSEY
16: Soul Survivor	48: Honeydew	80: NOT THAT DEEP	112: Flutterby A+B
17: NICEGIRL	49: Shalonda	81: Strut	113: WORD
18: ALL YOUR BASSES	50: FREDZS DANCE	82: ME TOO	114: Jive Ass
19: Z MAKIT BETTA	51: CHICKENLittle	83: RiotTower	115: Zs DANCE2
20: Surweet	52: STAINED	84: ZMANS THING	116: Love Fool
21: Zs WAY	53: Herbsnspice	85: Maidawn	117: GRAPES
22: Zs HAPPY	54: Zs ALONE	86: FEIST A Z	118: DIRTYBOY
23: I Spy	55: LUV JONES RMX	87: YUP	119: Poppers
24: CRUNK	56: INTERMISSION	88: FROSTY	120: REALLY
25: SAME OLE	57: Cassanova A+B	89: Cray Z	121: Blue Phatt
26: Zs WORM	58: Engenue	90: BUCSHOT	122: Champagne
27: HOLL A BACK	59: Victoria	91: Chinezz	123: Pimpatwork
28: Niteshade	60: My Man GLO	92: I Hope	124: TRIPPIN
29: DR.ZZ	61: DNglo	93: Nicola	125: Level Seven
30: ZMANS FLIGHT	62: Zs DANCE	94: Bootieshake	126: Why FahT
31: Wonder Bread	63: Danger Zone	95: GUESS WHO	127: JungleSoot

To Select a Range: Mac or PC (Shift- click)

To Select a Discontiguous item: Mac (Command- click); PC (Control- click)

E-Loader Operation Manual 7

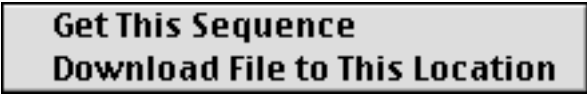
 **To Upload Patterns or Songs:**

Songs and patterns can be uploaded to your computer in four ways. A dialog box allows you to place the files in any location on your computer.

1. The “Get Selected” button uploads the selected patterns or songs.
2. The pull-down Browser menu on the menu bar offers the following options.

Browser	
Get Selected Sequences	⌘G
Get All Sequences of Current Bank	⇧⌘G
Get All Sequences of ALL Banks	
Refresh Names of Current Bank	⌘R
Refresh Names of ALL Sequences of ALL Banks	⇧⌘R
Cancel Name Loading	⌘.

3. Double- click on the selected items.
4. Right- click (PC) or Control-mouse click (Mac) on the selected pattern or song brings up the following pop-up menu.



 **To Download Patterns or Songs:**

The second option in the pop-up menu above is the method for downloading a single pattern or song to the selected location from the Sequence Bank Browser. You cannot download multiple sequences from the Sequence Bank Browser. See the “Sequence Downloader” section. Upon selecting this option, the standard “file picker” dialog box appears. Select the file and press “Open”. The file will be downloaded into the selected location on your XL-7, MP-7 or Proteus 2500.


Standard MIDI Files (SMFs) can also be simply dropped onto a Bank Browser location for downloading. This action will invoke the Download Destination Editor window (page 10). After confirmation, the file will be downloaded.

Cancel Name Loading

Since downloading sequence names over MIDI can take some time, this option allows you to cancel the operation. The shortcuts for this operation are: Command ⌘- (period) (Mac) or Control-(period) (PC).

Refresh Button

You can update the currently selected pattern or song bank names at any time by pressing the Refresh button. E-Loader will not be aware of any changes you have on the E-MU instrument until the bank is refreshed.

 *Clicking on a pattern or song name automatically refreshes that item name.*

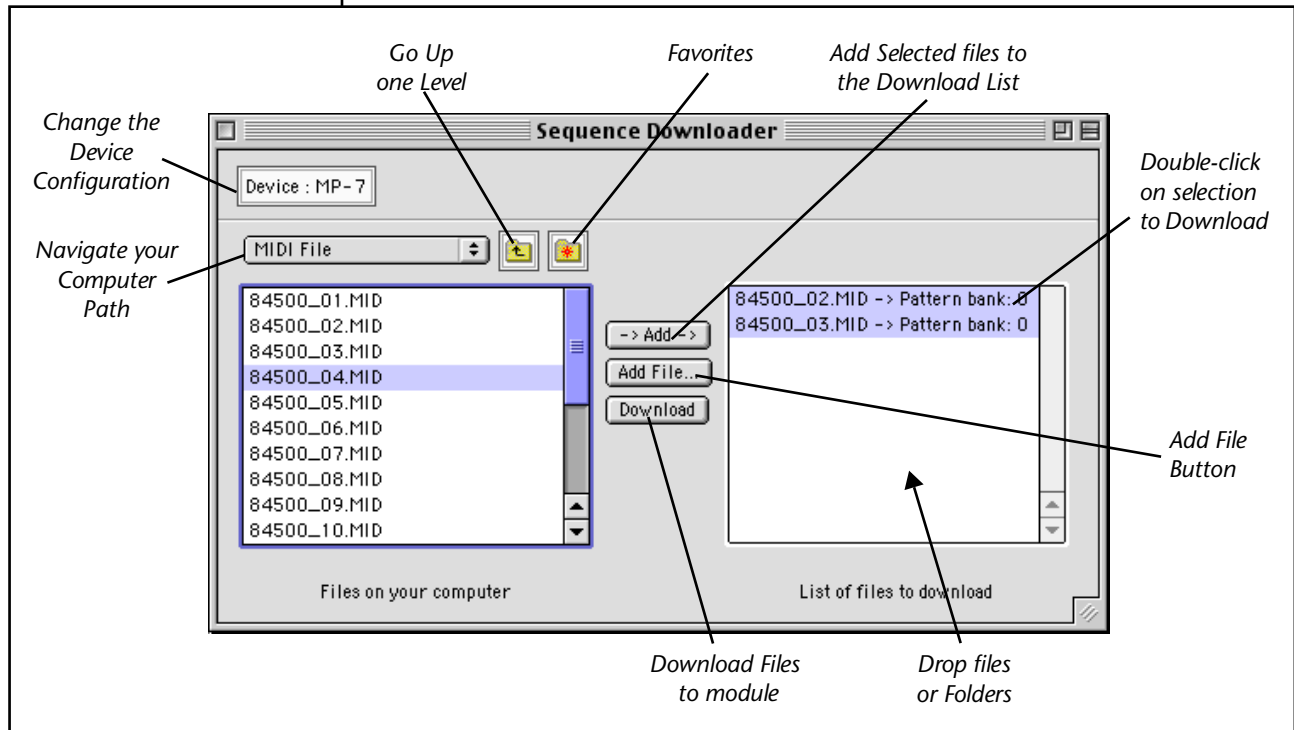


Sequence Downloader

The Sequence Downloader allows you to download a group of patterns or songs at once to your XL-7, MP-7 or Proteus 2500.

Click the Sequence Downloader icon:

The following window appears:

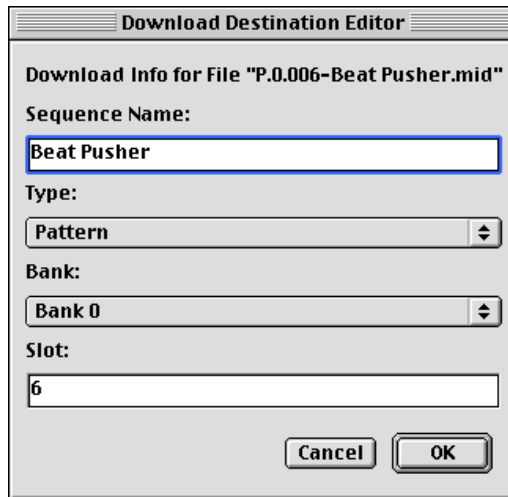


Files that were created by E-Loader will have a prefix added to the file name which indicates its source location. The following prefix, “P.0.127”, indicates, “Pattern, Bank 0, slot 127”. Upon download this prefix is used to automatically set the destination. If the prefix doesn’t exist (any SMF from another source) you must change the destination otherwise it will be placed in Pattern Bank 0, Slot 0.

To Download Sequences

1. Press the “Add File” button to add a single pattern or song. The standard “file picker” dialog box appears allowing you to find the file on your computer.
 - You can also select folder and files from the navigation bar located above the Computer Files area.
 - You can also simply drag and drop files into the download bin.

2. Select an item in the download bin, then press Command ⌘-I (Mac) or Control-I (PC) to invoke the Download Destination Editor window. This window allows you to change the sequence name, define it as a Pattern or Song, select the destination Bank and destination Slot (0-127).



3. Press **OK** to change the destination and return to the sequence downloader. Press **Cancel** to cancel the operation.

 - If there are multiple files selected, the Multiple Destination window appears. This window allows you to place multiple files in consecutive locations in XL-7, MP-7 or Proteus 2500.



Only checked items will be modified. This feature makes it easy to move an entire block of sequences into a new bank or location. For example: Changing the Bank to 1 and selecting a start index will renumber the selected items to Bank beginning at the starting index you selected.



You can drag and drop entire folders of patterns and songs into the destination bin.

SMF's that you place in song locations will be converted to "Type 0" SMF's. Either Type 0 or 1 SMF's can be downloaded into Pattern locations. Type 0 SMF's will be rechannelized to Track 1-MIDI channel 1, etc. Type 1 SMF's can have more than one MIDI channel per track. XL-7, MP-7 and Proteus 2500 will recognize a tempo track and 16 MIDI tracks.

4. **To Download:** Select the items you wish to download, then...
 - Double-click on the items.
 - Press the "Download" button.
 - Choose "Download Selection to Target" from the Download menu bar item.

A pop-up dialog box appears asking you if you're sure. (*This warning can be turned off in the Preferences menu.*) Press **OK** to continue or **Cancel** to cancel the operation.

5. Press **Delete** to remove any selected files from the download list.

Show Event Summary/Show Full Event Listing

With a file or files selected in the Sequence Downloader screen, two additional diagnostic tools are available in the "Downloader" pull-down menu. These tools produce a listing of events in the pattern or song and can be quite useful for analyzing your sequence files.

Show Event Summary of Selected Files

Shows a summary of events in each track, such as how many note-on's occurred.

Show Full Event Listing of Selected Files

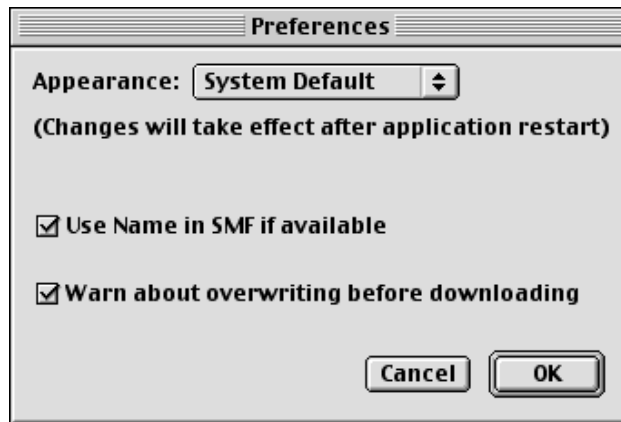
Produces a list of every event in each track of the selected pattern or song.



Preferences

Appearance

The windows can be displayed in Xtreme yellow (XL-7), Phatt purple (MP-7) or in System Default grey.



Use Name in SMF if Available

Standard MIDI Files can be saved with the sequence name embedded in them. This selection allows the E-MU instrument to use the *embedded name* instead of the *file name* when a sequence is downloaded. For example, suppose a SMF had the file name, "80423.mid" with an embedded file name, "Sunrise." With this option unchecked and after downloading, the sequence would be displayed as, "80423". With the option checked, the sequence would be displayed as "Sunrise."

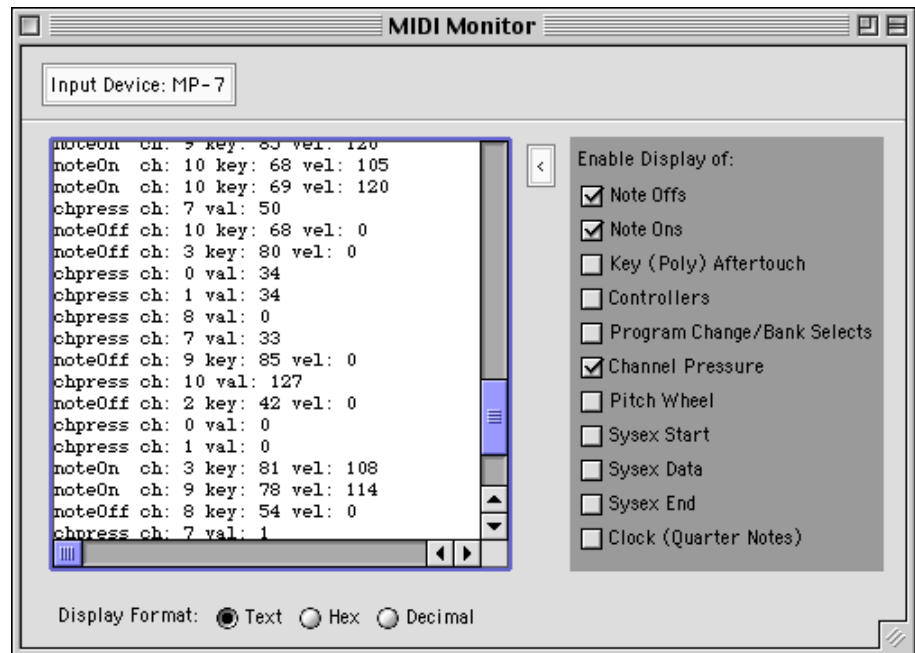
Warn about overwriting before downloading



This option invokes a warning screen before you download any file to your E-MU instrument to prevent accidental overwriting of sequences. With this option turned Off, downloading begins as soon as you double-click or select "Download". The default setting of this feature is On.



MIDI Monitor

The MIDI Monitor is a utility which allows you to view every MIDI message received by your MIDI interface. The MIDI monitor is an extremely handy diagnostic tool when you need to see exactly what is happening in the MIDI world. MIDI messages can be shown in plain English, in hexadecimal or in decimal. The “MIDI Message Filters” option allows you to either filter out or display various types of MIDI messages.



- **To Clear the Screen:** Press the **Delete** key.
- **To Show the Filters:** Press the  button, or select “Show Message Filters” from “Monitor” on the menu bar.
- **To Hide the Filters:** Press the  button, or select “Show Message Filters” from “Monitor” on the menu bar.

MIDI Menu Bar Items

The MIDI Menu on the Menu bar contains the following options:

MIDI Setup...

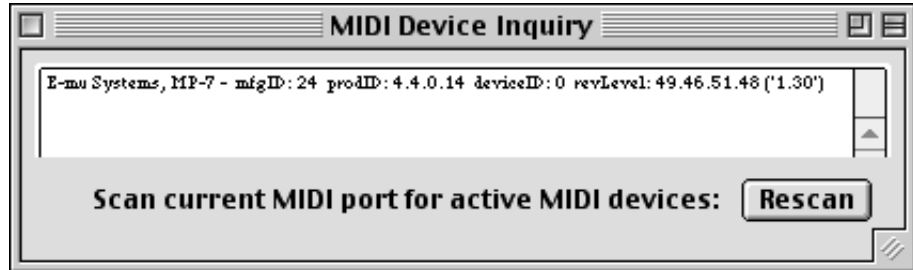
Calls up the MIDI Setup window described on page 4.

OMS Studio Setup... *(Mac only)*

Opens the OMS Setup Application.

Scan for MIDI Devices...

This option scans the selected MIDI port testing for bi-directional data transfer. When you click the Rescan button you should see the MIDI LED blink on your MIDI instrument. The Device ID and the software revision will also be displayed.



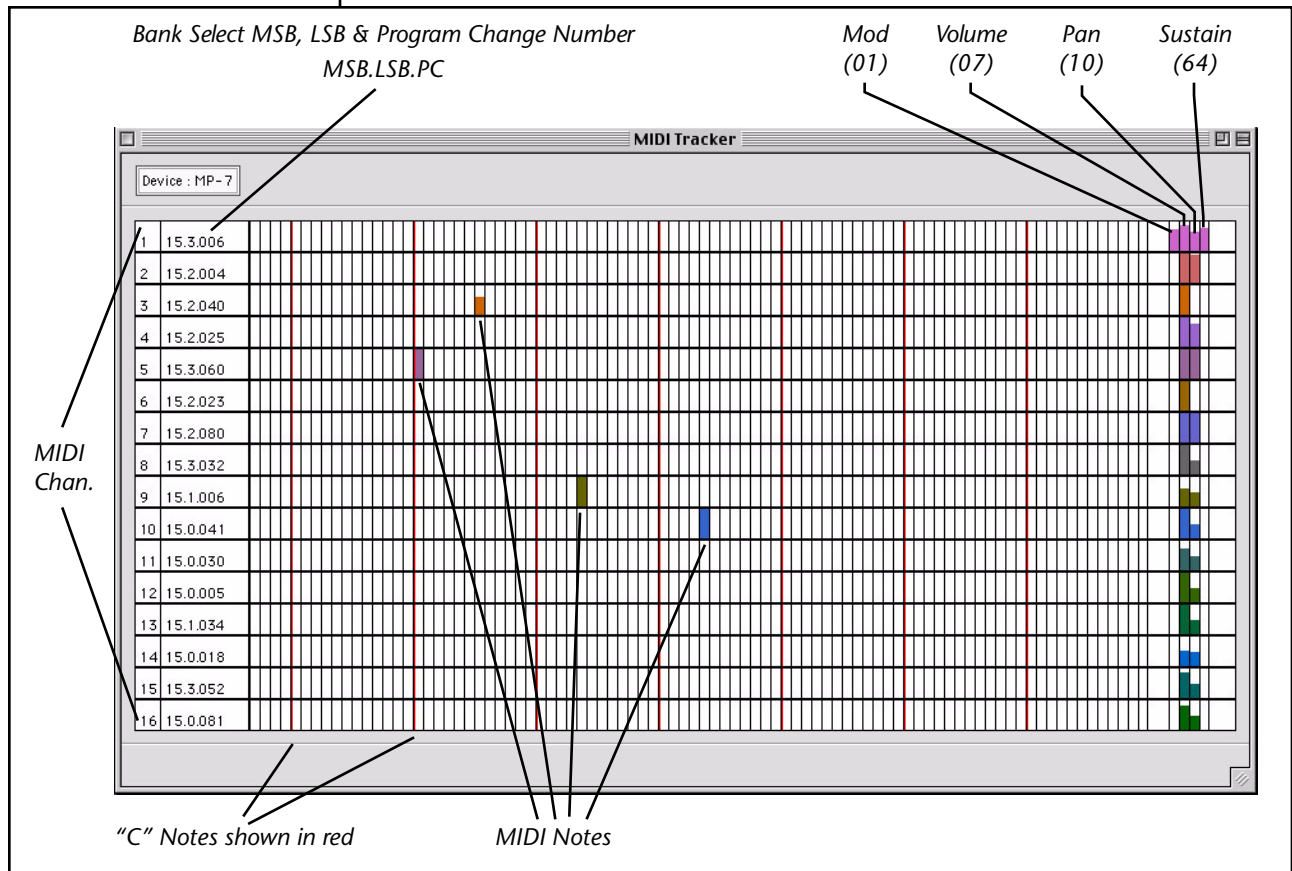
MIDI Event File Listing...

This option allows you to view the entire list of MIDI events in any Standard MIDI File on your computer.



MIDI Tracker

The MIDI Tracker is another useful utility which allows you to view note activity on 16 MIDI channels simultaneously. Note numbers are shown 0-127, left to right. Note velocities are represented by the height of the colored bars. MIDI channels 1-16 are shown from top to bottom. The red lines represent "C" notes.



The MIDI Continuous Controllers for Modulation Wheel (01), Volume (07), Pan (10) and Sustain switch (64) are shown for each channel on the right side of the display.

Play MIDI Notes by simply clicking and dragging your mouse over the grid. The played note numbers, note and channel are displayed in the lower left corner of the window.

Note: The Bank Select field will remain blank unless a Bank Select and Program Change is actually received.

The logo for E-MU SYSTEMS features a stylized blue icon of three horizontal bars on the left, followed by the text "E-MU SYSTEMS" in a bold, black, sans-serif font.

E-MU/ENSONIQ U.S.A.

1600 Green Hills Road
Scotts Valley, CA USA
95067-0015
Telephone: 831-438-1921
Fax: 831-438-8612
Internet: www.emu.com

E-MU/ENSONIQ

Europe, Africa, Middle East
Suite 6, Adam Ferguson House
Eskmills Industrial Park
Musselburgh, East Lothian
Scotland, EH21 7PQ
Tel: +44 (0) 131-653-6556
Fax: +44 (0) 131-665-0473